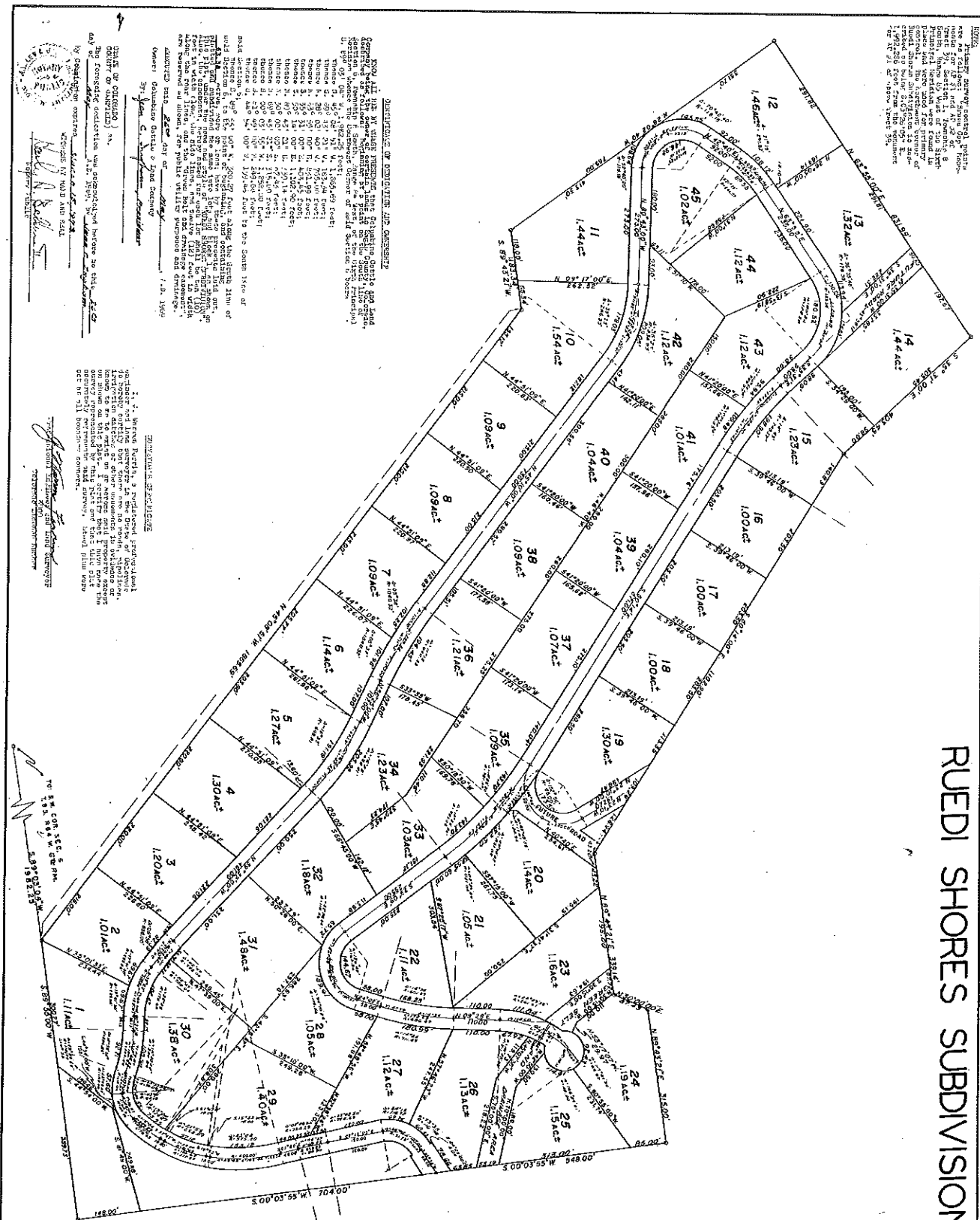


RUEDI SHORES SUBDIVISION



NOTE: The platting survey control points are shown for 12 1/2' and 12' 6" of South, 12' 6" and 12' 0" of East. The platting survey control points are shown for 12' 6" of South, 12' 0" and 12' 6" of East. The platting survey control points are shown for 12' 6" of South, 12' 0" and 12' 6" of East.

DESCRIPTION OF ADJACENT AND CORNERED

NOTE: All lots in this subdivision are subject to the same conditions and restrictions as those set forth in the platting survey control points. The platting survey control points are shown for 12 1/2' and 12' 6" of South, 12' 6" and 12' 0" of East. The platting survey control points are shown for 12' 6" of South, 12' 0" and 12' 6" of East. The platting survey control points are shown for 12' 6" of South, 12' 0" and 12' 6" of East.

DATE OF CONTROL: 1/1/1960
 The platting survey control points are shown for 12 1/2' and 12' 6" of South, 12' 6" and 12' 0" of East. The platting survey control points are shown for 12' 6" of South, 12' 0" and 12' 6" of East. The platting survey control points are shown for 12' 6" of South, 12' 0" and 12' 6" of East.

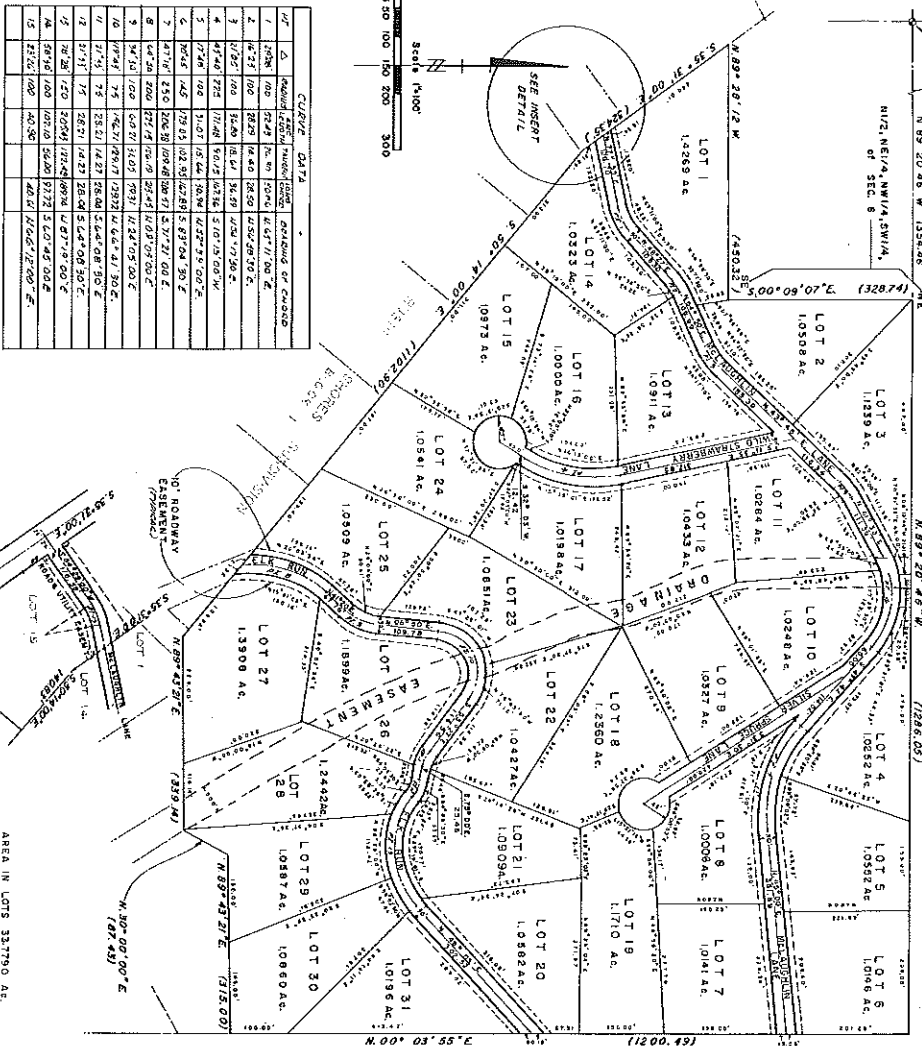
APPROVED BY THE BOARD OF SUPERVISORS OF THE COUNTY OF SAN DIEGO, CALIFORNIA, ON THIS 15th DAY OF JANUARY, 1960.

110857
 APPROVED BY THE BOARD OF SUPERVISORS OF THE COUNTY OF SAN DIEGO, CALIFORNIA, ON THIS 15th DAY OF JANUARY, 1960.

RUEDI SHORES SUBDIVISION

BLOCK 2

TO : BRASS GAP W 1/4 SEC. 6
T. 8 S., R. 84 W.
6TH PM.



LOT	ACRES	BEARING	DISTANCE	AREA
1	1.0233	N 89° 20' 46\"	110.00	1.0233
2	1.0233	N 89° 20' 46\"	110.00	1.0233
3	1.0233	N 89° 20' 46\"	110.00	1.0233
4	1.0233	N 89° 20' 46\"	110.00	1.0233
5	1.0233	N 89° 20' 46\"	110.00	1.0233
6	1.0233	N 89° 20' 46\"	110.00	1.0233
7	1.0233	N 89° 20' 46\"	110.00	1.0233
8	1.0233	N 89° 20' 46\"	110.00	1.0233
9	1.0233	N 89° 20' 46\"	110.00	1.0233
10	1.0233	N 89° 20' 46\"	110.00	1.0233
11	1.0233	N 89° 20' 46\"	110.00	1.0233
12	1.0233	N 89° 20' 46\"	110.00	1.0233
13	1.0233	N 89° 20' 46\"	110.00	1.0233
14	1.0233	N 89° 20' 46\"	110.00	1.0233
15	1.0233	N 89° 20' 46\"	110.00	1.0233
16	1.0233	N 89° 20' 46\"	110.00	1.0233
17	1.0233	N 89° 20' 46\"	110.00	1.0233
18	1.0233	N 89° 20' 46\"	110.00	1.0233
19	1.0233	N 89° 20' 46\"	110.00	1.0233
20	1.0233	N 89° 20' 46\"	110.00	1.0233
21	1.0233	N 89° 20' 46\"	110.00	1.0233
22	1.0233	N 89° 20' 46\"	110.00	1.0233
23	1.0233	N 89° 20' 46\"	110.00	1.0233
24	1.0233	N 89° 20' 46\"	110.00	1.0233
25	1.0233	N 89° 20' 46\"	110.00	1.0233
26	1.0233	N 89° 20' 46\"	110.00	1.0233
27	1.0233	N 89° 20' 46\"	110.00	1.0233
28	1.0233	N 89° 20' 46\"	110.00	1.0233
29	1.0233	N 89° 20' 46\"	110.00	1.0233
30	1.0233	N 89° 20' 46\"	110.00	1.0233
31	1.0233	N 89° 20' 46\"	110.00	1.0233

AREA IN LOTS 337790 AC.
AREA IN LOTS 33838 AC.
TOTAL 33838 AC.



[Signature]
Commissioner of Natural Resources
State of Colorado

[Signature]
Surveyor General
State of Colorado

[Signature]
Attorney at Law

114577

AMENDED PLAT 10-14-50

MAP OF PROPERTY LOCATED IN
SECTION 8, TOWNSHIP 8, SOUTH,
RANGE 84 WEST OF THE SIXTH PM.

RUEDEI SHORES SUBDIVISION
COLUMBIAN CATTLE AND LAND COMPANY
ASBEN, COLORADO

COLORADO
Surveyor General
June 12, 1970