

VICINITY MAP  
1" = 2000'

CITY OF GLENWOOD SPRINGS

THE FINAL PLAT/ CONDO PLAT SHOWN ON THIS MAP WAS APPROVED BY ORDINANCE NUMBER \_\_\_\_\_ OF THE SERIES OF 20 , ON THE \_\_\_\_\_ DAY OF \_\_\_\_\_, 2016

WITNESS MY HAND AND OFFICIAL SEAL OF THE CITY OF GLENWOOD SPRINGS.

ATTEST: \_\_\_\_\_ MAYOR  
CITY CLERK : SS

AND BY THIS CERTIFICATION HEREBY CONSENTS TO SAID SUBDIVISION PLAT AND

LIENHOLDER CONSENT AND SUBORDINATION

CENTENNIAL BANK AS THE HOLDER OF TRUST RECORDED ON OCTOBER 20, 2014, AS RECEPTION NO. 86631, HAS ASSUMED THE RESPONSIBILITY OF RECEIVING AND RECORDING THE RECORDING OF THIS PLAT AND SUBORDINATES ITS RIGHTS UNDER SAID DEED OF TRUST AND ASSIGNMENT OF RENTS TO THE MATTERS AND NOTES DEVICED HEREON.

CENTENNIAL BANK

BY: \_\_\_\_\_

STATE OF COLORADO )

) SS

COUNTY OF GARFIELD )

THE FOREGOING LIENHOLDER CONSENT AND SUBORDINATION WAS ACKNOWLEDGED BEFORE ME

THIS \_\_\_\_\_ DAY OF \_\_\_\_\_, A.D. 2016, BY \_\_\_\_\_

MY COMMISSION EXPIRES: \_\_\_\_\_

WITNESS MY HAND AND OFFICIAL SEAL.

NOTARY PUBLIC

PLAT NOTES:

1. THIS PLAT AND THE MATTERS SHOWN HEREON ARE SUBJECT TO ADDITIONAL TERMS AND CONDITIONS SET FORTH IN THE CONDOMINIUM DECLARATION FOR GLENWOOD COMMERCIAL CENTER CONDOMINIUMS RECORDED AS RECEPTION NO. \_\_\_\_\_ (THE DECLARATION).

2. ALL GCE AND LCE AREAS EXTERNAL TO UNIT BOUNDARIES OF ALL UNITS LOCATED IN BUILDINGS A THROUGH D, INCLUDING EXCEPT THOSE IMPROVEMENTS APPLICANT THEREOF LABELED AS R/W, CW, AND COW, AND SPECIFICALLY INCLUDING ALL AREAS WITHIN OUTSIDE STORAGE UNITS EQUIPMENT ELEMENTS NO. 1, SHALL BE DRAINAGE AND UTILITY EASEMENTS DEDICATED AS PROVIDED HERE IN AND IN THE DECLARATION.

3. THE TERMS AND CONDITIONS OF USE AND MAINTENANCE OF A UTILITY EASEMENT ARE PROVIDED FOR IN THE DECLARATION.

4. THE TERMS AND CONDITIONS OF USE AND MAINTENANCE OF AN ACCESS AND SUPPORT EASEMENT ARE PROVIDED FOR IN THE DECLARATION.

5. THE TERMS AND CONDITIONS OF USE OF AN EMERGENCY ACCESS EASEMENT ARE PROVIDED FOR IN THE DECLARATION.

6. THE TERMS AND CONDITIONS OF USE AND MAINTENANCE OF A DRIVEWAY ACCESS EASEMENT ARE PROVIDED FOR IN THE DECLARATION.

7. THE TERMS AND CONDITIONS OF USE AND MAINTENANCE OF STORMWATER FACILITIES ARE PROVIDED FOR IN THE DECLARATION.

8. THE REMAINING PARKING SPACES NOT LABELED TO BE PURCHASED (TPP) AND LIMITED COMMON ELEMENTS (LCE) ARE TO BE DESIGNATED AS GENERAL COMMON ELEMENTS (GCE).

SURVEYOR'S CERTIFICATE

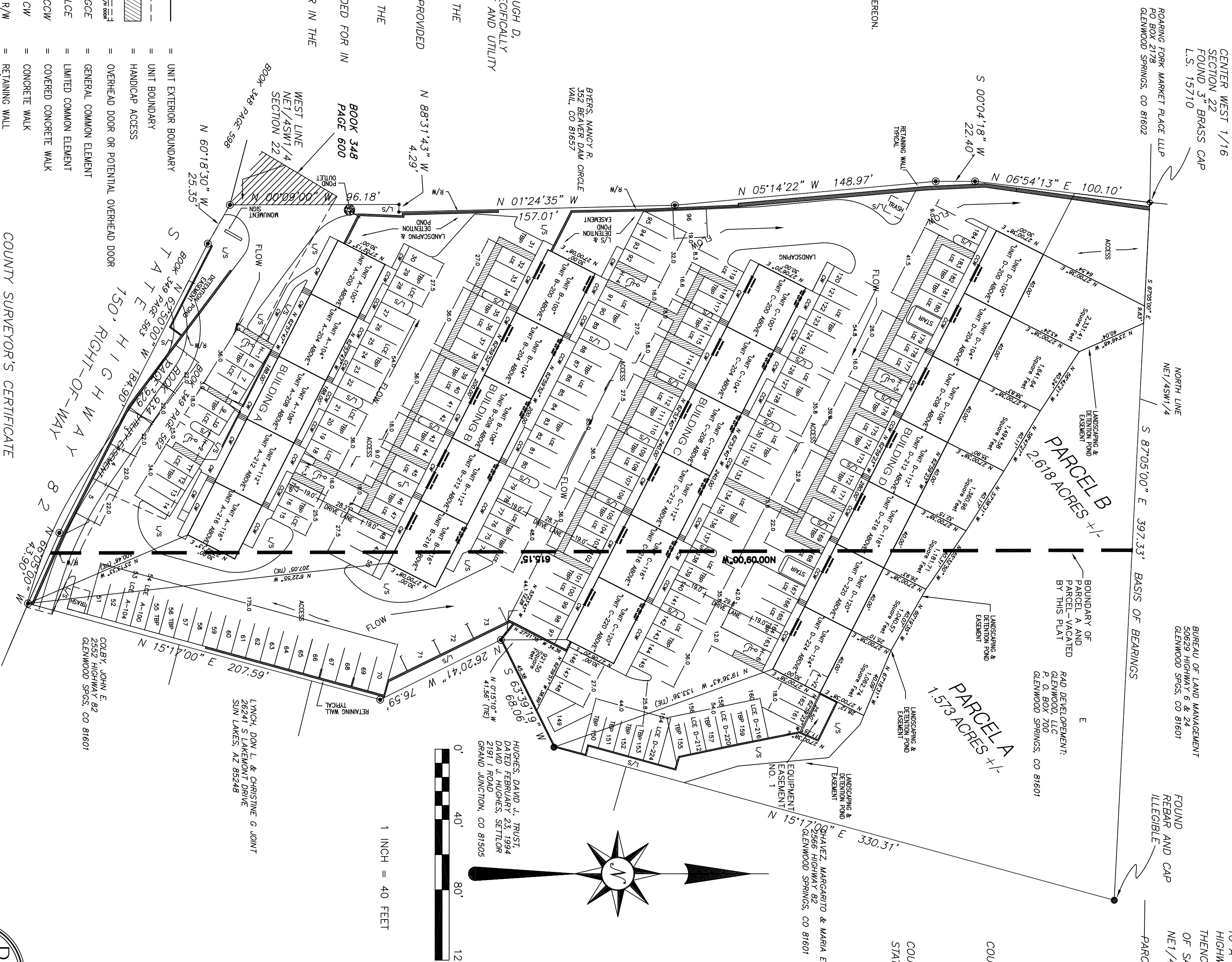
I, David C. Nicholson, do hereby certify that I am a registered land surveyor licensed under the laws of the State of Colorado, that this plat is a true, correct and complete plat of the lots laid out, plotted into lots and replatted into units, dedicated and shown hereon, that such plat was made from an accurate survey of said property by me and under my supervision and correctly shows the location and dimensions of the lots, units, easements and streets of said subdivision and resubdivision as the same are staked upon the ground in compliance with applicable regulations governing the subdivision of land.

IN WITNESS WHEREOF, I have set my hand and seal this \_\_\_\_\_ day of \_\_\_\_\_, A.D., 2016.

Registered Land Surveyor

Notarizing according to Colorado law, you must sign your name and seal upon 150.00' of the plat. If you are not a notary public, you must sign your name and seal upon 150.00' in no event, may an action based upon any defect in this survey be commenced more than ten years from the date of certification shown hereon.

FINAL PLAT AND CONDO MAPS  
GLENWOOD COMMERCIAL CENTER SUBDIVISION  
GLENWOOD SPRINGS, COLORADO  
A PARCEL OF LAND IN THE NE1/4SW1/4 SECTION 22,  
T6S, R89W OF THE 6TH P.M., STATE OF COLORADO  
THE PURPOSE OF THIS SUBDIVISION PLAT IS TO DELINEATE THE  
CONDOMINIUM UNITS WITHIN THE SUBDIVISION



LEGAL DESCRIPTION

PARCEL A  
A TRACT OF LAND SITUATED IN THE NE1/4SW1/4, SECTION 22, TOWNSHIP 6 SOUTH, RANGE 89 WEST OF THE 6TH PRINCIPAL MERIDIAN, MORE PARTICULARLY DESCRIBED AS FOLLOWS:

BEGINNING AT A POINT ON THE NORTH LINE OF SAID NE1/4SW1/4, WHENCE THE NORTHWEST CORNER OF SAID NE1/4SW1/4, BEARS 87 DEGREES 05' W 397.33 FEET SAID POINT ALSO BEING THE NORTHWEST CORNER OF THE AMENDED HUGHES SUBDIVISION RECORDED AS REC. #419357 IN THE RECORDS OF THE GARFIELD COUNTY CLERK'S OFFICE, THENCE ALONG THE WESTERN LINE OF SAID SUBDIVISION,

S 15 DEGREES 17' 00" W 330.31 FEET TO A POINT ON THE WESTERN LINE OF SAID SUBDIVISION, PARCEL B, THENCE LEAVING SAID WESTERN LINE S 63 DEGREES 39' 19" W 68.06 FEET, THENCE S 26 DEGREES 20' 41" E 76.59 FEET TO A POINT SAID WESTERN LINE, THENCE S 15 DEGREES 17' 00" W 207.59 FEET

TO A POINT ON THE NORTHERLY LINE OF THE RIGHT OF WAY OF COLORADO STATE HIGHWAY 82, THENCE N 66 DEGREES 05' 00" W 31.36 FEET ALONG THE NORTH LINE OF SAID RIGHT OF WAY

THENCE ALONG SAID WEST LINE N 00 DEGREES 09'00" W 615.15 FEET, MORE OR LESS TO THE NORTH LINE OF SAID NE1/4SW1/4, THENCE S 87 DEGREES 05'00" E 199.33 FEET ALONG THE NORTH LINE OF SAID

NE1/4SW1/4, TO THE POINT OF BEGINNING.

PARCEL B

A TRACT OF LAND SITUATED IN THE NE1/4SW1/4, SECTION 22, TOWNSHIP 6 SOUTH, RANGE 89 WEST OF THE 6TH PRINCIPAL MERIDIAN, MORE PARTICULARLY DESCRIBED AS FOLLOWS:

BEGINNING AT THE NORTHWEST CORNER OF SAID NE1/4SW1/4; THENCE S 87 DEGREES 05' 00" E 198.00 FEET; THENCE S 09 DEGREES 09'00" E 615.15 FEET, MORE OR LESS TO THE NORTH LINE OF COLORADO STATE

HIGHWAY 82, RIGHT OF WAY, THENCE N 66 DEGREES 05' 00" W 125.84 FEET ALONG SAID RIGHT OF WAY, THENCE CONTINUING ALONG SAID RIGHT OF WAY N 62 DEGREES 30' 28.55" W 164.50 FEET,

CONTINUING ALONG SAID RIGHT OF WAY N 00 DEGREES 08 DEGREES 23'55" W 164.50 FEET TO THE WEST LINE OF AN EXISTING FENCE LINE, THENCE ALONG SAID FENCE LINE THE FOLLOWING FIVE (5) COURSES:

1. S 88 31' 43" E A DISTANCE OF 4.29 FEET;  
2. N 01' 24' 35" W A DISTANCE OF 157.01 FEET;  
3. N 05' 14' 22" W A DISTANCE OF 22.40 FEET;  
4. N 07' 04' 18" E A DISTANCE OF 22.40 FEET;  
5. N 06 54' 13" E A DISTANCE OF 100.10 FEET TO THE POINT OF BEGINNING.

COUNTY OF GARFIELD  
STATE OF COLORADO

has by these presents laid out, plotted, subdivided and re-subdivided the same into units shown hereon and designate the following units of Glenwood Commercial Center Subdivision:

Unit A-100 Unit B-100 Unit C-100 Unit D-100  
Unit A-101 Unit B-101 Unit C-101 Unit D-101  
Unit A-102 Unit B-102 Unit C-102 Unit D-102  
Unit A-103 Unit B-103 Unit C-103 Unit D-103  
Unit A-104 Unit B-104 Unit C-104 Unit D-104  
Unit A-105 Unit B-105 Unit C-105 Unit D-105  
Unit A-106 Unit B-106 Unit C-106 Unit D-106  
Unit A-107 Unit B-107 Unit C-107 Unit D-107  
Unit A-108 Unit B-108 Unit C-108 Unit D-108  
Unit A-109 Unit B-109 Unit C-109 Unit D-109  
Unit A-110 Unit B-110 Unit C-110 Unit D-110  
Unit A-111 Unit B-111 Unit C-111 Unit D-111  
Unit A-112 Unit B-112 Unit C-112 Unit D-112  
Unit A-113 Unit B-113 Unit C-113 Unit D-113  
Unit A-114 Unit B-114 Unit C-114 Unit D-114  
Unit A-115 Unit B-115 Unit C-115 Unit D-115  
Unit A-116 Unit B-116 Unit C-116 Unit D-116  
Unit A-117 Unit B-117 Unit C-117 Unit D-117  
Unit A-118 Unit B-118 Unit C-118 Unit D-118  
Unit A-119 Unit B-119 Unit C-119 Unit D-119  
Unit A-120 Unit B-120 Unit C-120 Unit D-120  
Unit A-121 Unit B-121 Unit C-121 Unit D-121  
Unit A-122 Unit B-122 Unit C-122 Unit D-122  
Unit A-123 Unit B-123 Unit C-123 Unit D-123  
Unit A-124 Unit B-124 Unit C-124 Unit D-124  
Unit A-125 Unit B-125 Unit C-125 Unit D-125  
Unit A-126 Unit B-126 Unit C-126 Unit D-126  
Unit A-127 Unit B-127 Unit C-127 Unit D-127  
Unit A-128 Unit B-128 Unit C-128 Unit D-128  
Unit A-129 Unit B-129 Unit C-129 Unit D-129  
Unit A-130 Unit B-130 Unit C-130 Unit D-130  
Unit A-131 Unit B-131 Unit C-131 Unit D-131  
Unit A-132 Unit B-132 Unit C-132 Unit D-132  
Unit A-133 Unit B-133 Unit C-133 Unit D-133  
Unit A-134 Unit B-134 Unit C-134 Unit D-134  
Unit A-135 Unit B-135 Unit C-135 Unit D-135  
Unit A-136 Unit B-136 Unit C-136 Unit D-136  
Unit A-137 Unit B-137 Unit C-137 Unit D-137  
Unit A-138 Unit B-138 Unit C-138 Unit D-138  
Unit A-139 Unit B-139 Unit C-139 Unit D-139  
Unit A-140 Unit B-140 Unit C-140 Unit D-140  
Unit A-141 Unit B-141 Unit C-141 Unit D-141  
Unit A-142 Unit B-142 Unit C-142 Unit D-142  
Unit A-143 Unit B-143 Unit C-143 Unit D-143  
Unit A-144 Unit B-144 Unit C-144 Unit D-144  
Unit A-145 Unit B-145 Unit C-145 Unit D-145  
Unit A-146 Unit B-146 Unit C-146 Unit D-146  
Unit A-147 Unit B-147 Unit C-147 Unit D-147  
Unit A-148 Unit B-148 Unit C-148 Unit D-148  
Unit A-149 Unit B-149 Unit C-149 Unit D-149  
Unit A-150 Unit B-150 Unit C-150 Unit D-150  
Unit A-151 Unit B-151 Unit C-151 Unit D-151  
Unit A-152 Unit B-152 Unit C-152 Unit D-152  
Unit A-153 Unit B-153 Unit C-153 Unit D-153  
Unit A-154 Unit B-154 Unit C-154 Unit D-154  
Unit A-155 Unit B-155 Unit C-155 Unit D-155  
Unit A-156 Unit B-156 Unit C-156 Unit D-156  
Unit A-157 Unit B-157 Unit C-157 Unit D-157  
Unit A-158 Unit B-158 Unit C-158 Unit D-158  
Unit A-159 Unit B-159 Unit C-159 Unit D-159  
Unit A-160 Unit B-160 Unit C-160 Unit D-160  
Unit A-161 Unit B-161 Unit C-161 Unit D-161  
Unit A-162 Unit B-162 Unit C-162 Unit D-162  
Unit A-163 Unit B-163 Unit C-163 Unit D-163  
Unit A-164 Unit B-164 Unit C-164 Unit D-164  
Unit A-165 Unit B-165 Unit C-165 Unit D-165  
Unit A-166 Unit B-166 Unit C-166 Unit D-166  
Unit A-167 Unit B-167 Unit C-167 Unit D-167  
Unit A-168 Unit B-168 Unit C-168 Unit D-168  
Unit A-169 Unit B-169 Unit C-169 Unit D-169  
Unit A-170 Unit B-170 Unit C-170 Unit D-170  
Unit A-171 Unit B-171 Unit C-171 Unit D-171  
Unit A-172 Unit B-172 Unit C-172 Unit D-172  
Unit A-173 Unit B-173 Unit C-173 Unit D-173  
Unit A-174 Unit B-174 Unit C-174 Unit D-174  
Unit A-175 Unit B-175 Unit C-175 Unit D-175  
Unit A-176 Unit B-176 Unit C-176 Unit D-176  
Unit A-177 Unit B-177 Unit C-177 Unit D-177  
Unit A-178 Unit B-178 Unit C-178 Unit D-178  
Unit A-179 Unit B-179 Unit C-179 Unit D-179  
Unit A-180 Unit B-180 Unit C-180 Unit D-180  
Unit A-181 Unit B-181 Unit C-181 Unit D-181  
Unit A-182 Unit B-182 Unit C-182 Unit D-182  
Unit A-183 Unit B-183 Unit C-183 Unit D-183  
Unit A-184 Unit B-184 Unit C-184 Unit D-184  
Unit A-185 Unit B-185 Unit C-185 Unit D-185  
Unit A-186 Unit B-186 Unit C-186 Unit D-186  
Unit A-187 Unit B-187 Unit C-187 Unit D-187  
Unit A-188 Unit B-188 Unit C-188 Unit D-188  
Unit A-189 Unit B-189 Unit C-189 Unit D-189  
Unit A-190 Unit B-190 Unit C-190 Unit D-190  
Unit A-191 Unit B-191 Unit C-191 Unit D-191  
Unit A-192 Unit B-192 Unit C-192 Unit D-192  
Unit A-193 Unit B-193 Unit C-193 Unit D-193  
Unit A-194 Unit B-194 Unit C-194 Unit D-194  
Unit A-195 Unit B-195 Unit C-195 Unit D-195  
Unit A-196 Unit B-196 Unit C-196 Unit D-196  
Unit A-197 Unit B-197 Unit C-197 Unit D-197  
Unit A-198 Unit B-198 Unit C-198 Unit D-198  
Unit A-199 Unit B-199 Unit C-199 Unit D-199  
Unit A-200 Unit B-200 Unit C-200 Unit D-200  
Unit A-201 Unit B-201 Unit C-201 Unit D-201  
Unit A-202 Unit B-202 Unit C-202 Unit D-202  
Unit A-203 Unit B-203 Unit C-203 Unit D-203  
Unit A-204 Unit B-204 Unit C-204 Unit D-204  
Unit A-205 Unit B-205 Unit C-205 Unit D-205  
Unit A-206 Unit B-206 Unit C-206 Unit D-206  
Unit A-207 Unit B-207 Unit C-207 Unit D-207  
Unit A-208 Unit B-208 Unit C-208 Unit D-208  
Unit A-209 Unit B-209 Unit C-209 Unit D-209  
Unit A-210 Unit B-210 Unit C-210 Unit D-210  
Unit A-211 Unit B-211 Unit C-211 Unit D-211  
Unit A-212 Unit B-212 Unit C-212 Unit D-212  
Unit A-213 Unit B-213 Unit C-213 Unit D-213  
Unit A-214 Unit B-214 Unit C-214 Unit D-214  
Unit A-215 Unit B-215 Unit C-215 Unit D-215  
Unit A-216 Unit B-216 Unit C-216 Unit D-216  
Unit A-217 Unit B-217 Unit C-217 Unit D-217  
Unit A-218 Unit B-218 Unit C-218 Unit D-218  
Unit A-219 Unit B-219 Unit C-219 Unit D-219  
Unit A-220 Unit B-220 Unit C-220 Unit D-220  
Unit A-221 Unit B-221 Unit C-221 Unit D-221  
Unit A-222 Unit B-222 Unit C-222 Unit D-222  
Unit A-223 Unit B-223 Unit C-223 Unit D-223  
Unit A-224 Unit B-224 Unit C-224 Unit D-224  
Unit A-225 Unit B-225 Unit C-225 Unit D-225  
Unit A-226 Unit B-226 Unit C-226 Unit D-226  
Unit A-227 Unit B-227 Unit C-227 Unit D-227  
Unit A-228 Unit B-228 Unit C-228 Unit D-228  
Unit A-229 Unit B-229 Unit C-229 Unit D-229  
Unit A-230 Unit B-230 Unit C-230 Unit D-230  
Unit A-231 Unit B-231 Unit C-231 Unit D-231  
Unit A-232 Unit B-232 Unit C-232 Unit D-232  
Unit A-233 Unit B-233 Unit C-233 Unit D-233  
Unit A-234 Unit B-234 Unit C-234 Unit D-234  
Unit A-235 Unit B-235 Unit C-235 Unit D-235  
Unit A-236 Unit B-236 Unit C-236 Unit D-236  
Unit A-237 Unit B-237 Unit C-237 Unit D-237  
Unit A-238 Unit B-238 Unit C-238 Unit D-238  
Unit A-239 Unit B-239 Unit C-239 Unit D-239  
Unit A-240 Unit B-240 Unit C-240 Unit D-240  
Unit A-241 Unit B-241 Unit C-241 Unit D-241  
Unit A-242 Unit B-242 Unit C-242 Unit D-242  
Unit A-243 Unit B-243 Unit C-243 Unit D-243  
Unit A-244 Unit B-244 Unit C-244 Unit D-244  
Unit A-245 Unit B-245 Unit C-245 Unit D-245  
Unit A-246 Unit B-246 Unit C-246 Unit D-246  
Unit A-247 Unit B-247 Unit C-247 Unit D-247  
Unit A-248 Unit B-248 Unit C-248 Unit D-248  
Unit A-249 Unit B-249 Unit C-249 Unit D-249  
Unit A-250 Unit B-250 Unit C-250 Unit D-250  
Unit A-251 Unit B-251 Unit C-251 Unit D-251  
Unit A-252 Unit B-252 Unit C-252 Unit D-252  
Unit A-253 Unit B-253 Unit C-253 Unit D-253  
Unit A-254 Unit B-254 Unit C-254 Unit D-254  
Unit A-255 Unit B-255 Unit C-255 Unit D-255  
Unit A-256 Unit B-256 Unit C-256 Unit D-256  
Unit A-257 Unit B-257 Unit C-257 Unit D-257  
Unit A-258 Unit B-258 Unit C-258 Unit D-258  
Unit A-259 Unit B-259 Unit C-259 Unit D-259  
Unit A-260 Unit B-260 Unit C-260 Unit D-260  
Unit A-261 Unit B-261 Unit C-261 Unit D-261  
Unit A-262 Unit B-262 Unit C-262 Unit D-262  
Unit A-263 Unit B-263 Unit C-263 Unit D-263  
Unit A-264 Unit B-264 Unit C-264 Unit D-264  
Unit A-265 Unit B-265 Unit C-265 Unit D-265  
Unit A-266 Unit B-266 Unit C-266 Unit D-266  
Unit A-267 Unit B-267 Unit C-267 Unit D-267  
Unit A-268 Unit B-268 Unit C-268 Unit D-268  
Unit A-269 Unit B-269 Unit C-269 Unit D-269  
Unit A-270 Unit B-270 Unit C-270 Unit D-270  
Unit A-271 Unit B-271 Unit C-271 Unit D-271  
Unit A-272 Unit B-272 Unit C-272 Unit D-272  
Unit A-273 Unit B-273 Unit C-273 Unit D-273  
Unit A-274 Unit B-274 Unit C-274 Unit D-274  
Unit A-275 Unit B-275 Unit C-275 Unit D-275  
Unit A-276 Unit B-276 Unit C-276 Unit D-276  
Unit A-277 Unit B-277 Unit C-277 Unit D-277  
Unit A-278 Unit B-278 Unit C-278 Unit D-278  
Unit A-279 Unit B-279 Unit C-279 Unit D-279  
Unit A-280 Unit B-280 Unit C-280 Unit D-280  
Unit A-281 Unit B-281 Unit C-281 Unit D-281  
Unit A-282 Unit B-282 Unit C-282 Unit D-282  
Unit A-283 Unit B-283 Unit C-283 Unit D-283  
Unit A-284 Unit B-284 Unit C-284 Unit D-284  
Unit A-285 Unit B-285 Unit C-285 Unit D-285  
Unit A-286 Unit B-286 Unit C-286 Unit D-286  
Unit A-287 Unit B-287 Unit C-287 Unit D-287  
Unit A-288 Unit B-288 Unit C-288 Unit D-288  
Unit A-289 Unit B-289 Unit C-289 Unit D-289  
Unit A-290 Unit B-290 Unit C-290 Unit D-290  
Unit A-291 Unit B-291 Unit C-291 Unit D-291  
Unit A-292 Unit B-292 Unit C-292 Unit D-292  
Unit A-293 Unit B-293 Unit C-293 Unit D-293  
Unit A-294 Unit B-294 Unit C-294 Unit D-294  
Unit A-295 Unit B-295 Unit C-295 Unit D-295  
Unit A-296 Unit B-296 Unit C-296 Unit D-296  
Unit A-297 Unit B-297 Unit C-297 Unit D-297  
Unit A-298 Unit B-298 Unit C-298 Unit D-298  
Unit A-299 Unit B-299 Unit C-299 Unit D-299  
Unit A-300 Unit B-300 Unit C-300 Unit D-300  
Unit A-301 Unit B-301 Unit C-301 Unit D-301  
Unit A-302 Unit B-302 Unit C-302 Unit D-302  
Unit A-303 Unit B-303 Unit C-303 Unit D-303  
Unit A-304 Unit B-304 Unit C-304 Unit D-304  
Unit A-305 Unit B-305 Unit C-305 Unit D-305  
Unit A-306 Unit B-306 Unit C-306 Unit D-306  
Unit A-307 Unit B-307 Unit C-307 Unit D-307  
Unit A-308 Unit B-308 Unit C-308 Unit D-308  
Unit A-309 Unit B-309 Unit C-309 Unit D-309  
Unit A-310 Unit B-310 Unit C-310 Unit D-310  
Unit A-311 Unit B-311 Unit C-311 Unit D-311  
Unit A-312 Unit B-312 Unit C-312 Unit D-312  
Unit A-313 Unit B-313 Unit C-313 Unit D-313  
Unit A-314 Unit B-314 Unit C-314 Unit D-314  
Unit A-315 Unit B-315 Unit C-315 Unit D-315  
Unit A-316 Unit B-316 Unit C-316 Unit D-316  
Unit A-317 Unit B-317 Unit C-317 Unit D-317  
Unit A-318 Unit B-318 Unit C-318 Unit D-318  
Unit A-319 Unit B-319 Unit C-319 Unit D-319  
Unit A-320 Unit B-320 Unit C-320 Unit D-320  
Unit A-321 Unit B-321 Unit C-321 Unit D-321  
Unit A-322 Unit B-322 Unit C-322 Unit D-322  
Unit A-323 Unit B-323 Unit C-323 Unit D-323  
Unit A-324 Unit B-324 Unit C-324 Unit D-324  
Unit A-325 Unit B-325 Unit C-325 Unit D-325  
Unit A-326 Unit B-326 Unit C-326 Unit D-326  
Unit A-327 Unit B-327 Unit C-327 Unit D-327  
Unit A-328 Unit B-328 Unit C-328 Unit D-328  
Unit A-329 Unit B-329 Unit C-329 Unit D-329  
Unit A-330 Unit B-330 Unit C-330 Unit D-330  
Unit A-331 Unit B-331 Unit C-331 Unit D-331  
Unit A-332 Unit B-332 Unit C-332 Unit D-332  
Unit A-333 Unit B-333 Unit C-333 Unit D-333  
Unit A-334 Unit B-334 Unit C-334 Unit D-334  
Unit A-335 Unit B-335 Unit C-335 Unit D-335  
Unit A-336 Unit B-336 Unit C-336 Unit D-336  
Unit A-337 Unit B-337 Unit C-337 Unit D-337  
Unit A-338 Unit B-338 Unit C-338 Unit D-338  
Unit A-339 Unit B-339 Unit C-339 Unit D-339  
Unit A-340 Unit B-340 Unit C-340 Unit D-340  
Unit A-341 Unit B-341 Unit C-341 Unit D-341  
Unit A-342 Unit B-342 Unit C-342 Unit D-342  
Unit A-343 Unit B-343 Unit C-343 Unit D-343  
Unit A-344 Unit B-344 Unit C-344 Unit D-344  
Unit A-345 Unit B-345 Unit C-345 Unit D-345  
Unit A-346 Unit B-346 Unit C-346 Unit D-346  
Unit A-347 Unit B-347 Unit C-347 Unit D-347  
Unit A-348 Unit B-348 Unit C-348 Unit D-348  
Unit A-349 Unit B-349 Unit C-349 Unit D-349  
Unit A-350 Unit B-350 Unit C-350 Unit D-350  
Unit A-351 Unit B-351 Unit C-351 Unit D-351  
Unit A-352 Unit B-352 Unit C-352 Unit D-352  
Unit A-353 Unit B-353 Unit C-353 Unit D-353  
Unit A-354 Unit B-354 Unit C-354 Unit D-354  
Unit A-355 Unit B-355 Unit C-355 Unit D-355  
Unit A-356 Unit B-356 Unit C-356 Unit D-356  
Unit A-357 Unit B-357 Unit C-357 Unit D-357  
Unit A-358 Unit B-358 Unit C-358 Unit D-358  
Unit A-359 Unit B-359 Unit C-359 Unit D-359  
Unit A-360 Unit B-360 Unit C-360 Unit D-360  
Unit A-361 Unit B-361 Unit C-361 Unit D-361  
Unit A-362 Unit B-362 Unit C-362 Unit D-362  
Unit A-363 Unit B-363 Unit C-363 Unit D-363  
Unit A-364 Unit B-364 Unit C-364 Unit D-364  
Unit A-365 Unit B-365 Unit C-365 Unit D-365  
Unit A-366 Unit B-366 Unit C-366 Unit D-366  
Unit A-367 Unit B-367 Unit C-367 Unit D-367  
Unit A-368 Unit B-368 Unit C-368 Unit D-368  
Unit A-369 Unit B-369 Unit C-369 Unit D-369  
Unit A-370 Unit B-370 Unit C-370 Unit D-370  
Unit A-371 Unit B-371 Unit C-371 Unit D-371  
Unit A-372 Unit B-372 Unit C-372 Unit D-372  
Unit A-373 Unit B-373 Unit C-373 Unit D-373  
Unit A-374 Unit B-374 Unit C-374 Unit D-374  
Unit A-375 Unit B-375 Unit C-375 Unit D-375  
Unit A-376 Unit B-376 Unit C-376 Unit D-376  
Unit A-377 Unit B-377 Unit C-377 Unit D-377  
Unit A-378 Unit B-378 Unit C-378 Unit D-378  
Unit A-379 Unit B-379 Unit C-379 Unit D-379  
Unit A-380 Unit B-380 Unit C-380 Unit D-380  
Unit A-381 Unit B-381 Unit C-381 Unit D-381  
Unit A-382 Unit B-382 Unit C-382 Unit D-382  
Unit A-383 Unit B-383 Unit C-383 Unit D-383  
Unit A-384 Unit B-384 Unit C-384 Unit D-384  
Unit A-385 Unit B-385 Unit C-385 Unit D-385  
Unit A-386 Unit B-386 Unit C-386 Unit D-386  
Unit A-387 Unit B-387 Unit C-387 Unit D-387  
Unit A-388 Unit B-388 Unit C-388 Unit D-388  
Unit A-389 Unit B-389 Unit C-389 Unit D-389  
Unit A-390 Unit B-390 Unit C-390 Unit D-390  
Unit A-391 Unit B-391 Unit C-391 Unit D-391  
Unit A-392 Unit B-392 Unit C-392 Unit D-392  
Unit A-393 Unit B-393 Unit C-393 Unit D-393  
Unit A-394 Unit B-394 Unit C-394 Unit D-394  
Unit A-395 Unit B-395 Unit C-395 Unit D-395  
Unit A-396 Unit B-396 Unit C-396 Unit D-396  
Unit A-397 Unit B-397 Unit C-397 Unit D-397  
Unit A-398 Unit B-398 Unit C-398 Unit D-398  
Unit A-399 Unit B-399 Unit C-399 Unit D-399  
Unit A-400 Unit B-400 Unit C-400 Unit D-400  
Unit A-401 Unit B-401 Unit C-401 Unit D-401  
Unit A-402 Unit B-402 Unit C-402 Unit D-402  
Unit A-403 Unit B-403 Unit C-403 Unit D-403  
Unit A-404 Unit B-404 Unit C-404 Unit D-404  
Unit A-405 Unit B-405 Unit C-405 Unit D-405  
Unit A-406 Unit B-406 Unit C-406 Unit D-406  
Unit A-407 Unit B-407 Unit C-407 Unit D-407  
Unit A-408 Unit B-408 Unit C-408 Unit D-408  
Unit A-409 Unit B-409 Unit C-409 Unit D-409  
Unit A-410 Unit B-410 Unit C-410 Unit D-410  
Unit A-411 Unit B-411 Unit C-411 Unit D-411  
Unit A-412 Unit B-412 Unit C-412 Unit D-412  
Unit A-413 Unit B-413 Unit C-413 Unit D-413  
Unit A-414 Unit B-414 Unit C-414 Unit D-414  
Unit A-415 Unit B-415 Unit C-415 Unit D-415  
Unit A-416 Unit B-416 Unit C-416 Unit D-416  
Unit A-417 Unit B-417 Unit C-417 Unit D-417  
Unit A-418 Unit B-418 Unit C-418 Unit D-418  
Unit A-419 Unit B-419 Unit C-419 Unit D-419  
Unit A-420 Unit B-420 Unit C-420 Unit D-420  
Unit A-421 Unit B-421 Unit C-421 Unit D-421  
Unit A-422 Unit B-422 Unit C-422 Unit D-422  
Unit A-423 Unit B-423 Unit C-423 Unit D-423  
Unit A-424 Unit B-424 Unit C-424 Unit D-424  
Unit A-425 Unit B-425 Unit C-425 Unit D-425  
Unit A-426 Unit B-426 Unit C-426 Unit D-426  
Unit A-427 Unit B-427 Unit C-427 Unit D-427  
Unit A-428 Unit B-428 Unit C-428 Unit D-428  
Unit A-429 Unit B-429 Unit C-429 Unit D-429  
Unit A-43